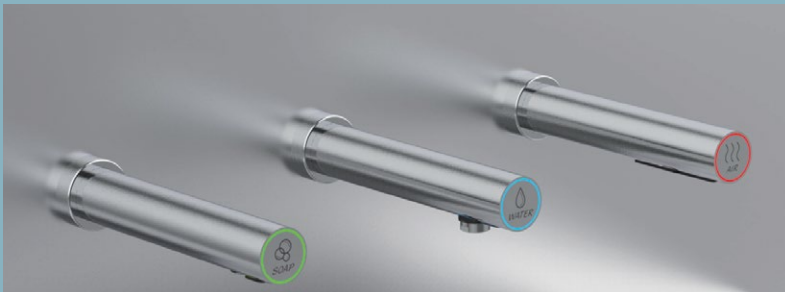
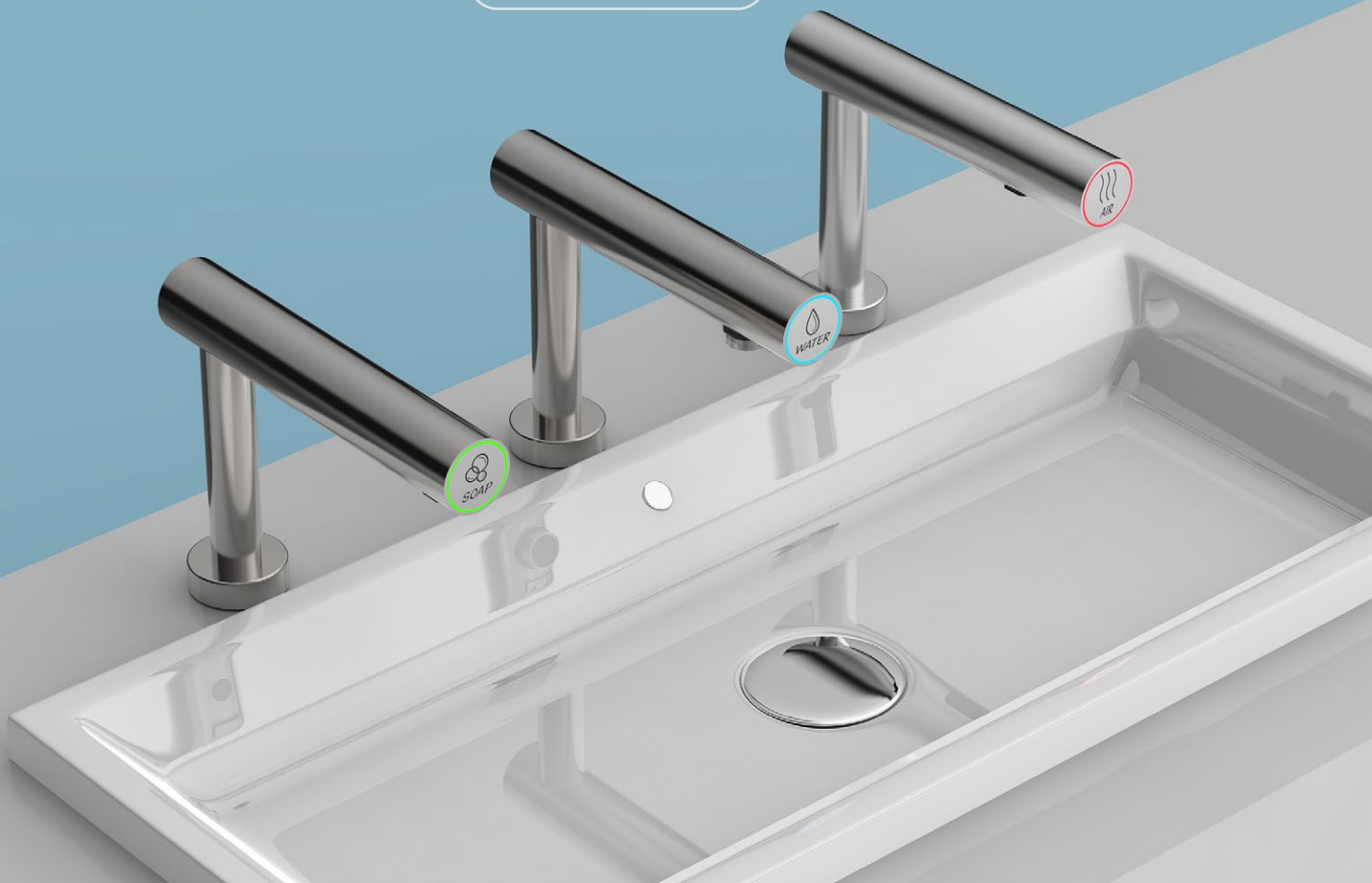


TOUCHFREE SOPHISTICATION

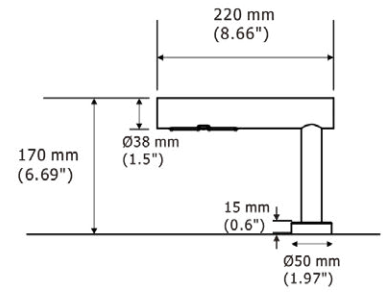
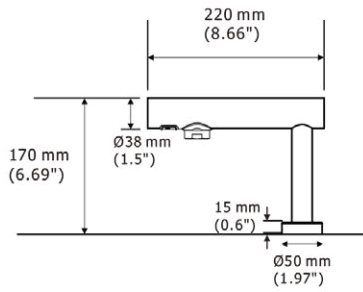
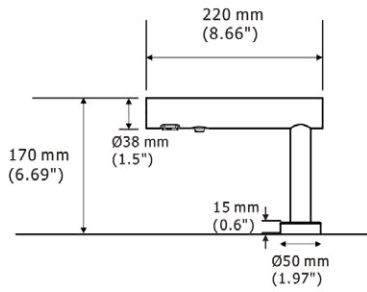
Introducing the EcoTap Trio
FOAM SOAP | FAUCET | HAND DRYER

PALMER
FIXTURE



**WALL MOUNT OPTION
ALSO AVAILABLE!**

SPECIAL ORDER



TECHNICAL SPECIFICATIONS: FOAM SOAP DISPENSER

Material: Stainless Steel

Power Source: AC

Sensing Range: 4.72" ± .78", Adjustable

Capacity: 1500 mL Foam Soap

Pump Life Cycle: 100K

Mechanism Life Cycle: 500K

Drip Proof: IP35 ▲

Mounting: Surface Spout

Model: SD1500-09 (liquid available for special order)

Dimensions: 1.97" W x 6.69" H x 8.66" D (spout)

Wall Mount (Special Order): SD1500-09W

TECHNICAL SPECIFICATIONS: FAUCET

Material: Stainless Steel

Power Source: AC

Sensing Range: 4.72" ± .78", Adjustable

Auto Shut-Off: 1 Minute

Operating Water Pressure: 10~100 PSI

Flowing Volume: .05-1 L/Minute

Drip Proof: IP35 ▲

Mounting: Surface Spout

Model: AF0304-09

Dimensions: 1.97" W x 6.69" H x 8.66" D (spout)

Wall Mount (Special Order): AF0304-09W

TECHNICAL SPECIFICATIONS: HAND DRYER

Material: Stainless Steel

Motor Type: Adjustable brush type, dual ball bearings

Operating Airflow: 16,535-19,882 LFM, Adjustable

Sound Level: MIN 68.5dB to 70.5dB MAX @1m

Thermal Protection:

Thermostat Shuts Off 203°F (95°C)

Air Output Temperature:

122°F (57°C)

Thermal Cut-Off at 185°F (85°C)

Ambient Temperature 77°F (25°C)

Isolation: Class 1

Drip Proof: IP35 ▲

Watts: 500W

RPM: 22,000-29,000, Adjustable

Model, Voltage & Amps:

Mounting: Surface Spout with Undermount Motor

HD0935-09 110/120 Volts

7.6-8.4 Amps

Dimensions: 1.97" W x 6.69" H x 8.66" D (spout)

HD0936-09 220/240 Volts

3.8-4.2 Amps

12.05" W x 7.60" H x 5.85" D (motor)

(special order)

Wall Mount (Special Order): HD0935-09W

Recommended Distance Between Units: 7.09" (180mm)

Phone: 920.884.8698

Toll-Free: 800.558.8678

Fax: 920.884.8699

Email: info@palmerfixture.com



Palmer Fixture

PO BOX 10887

Green Bay, WI 54307

Website: www.palmerfixture.com

V11.2021