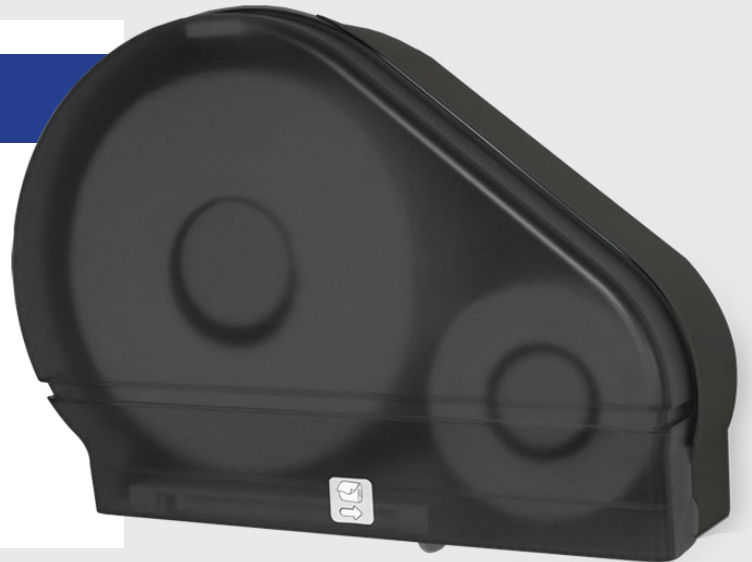


**Single 9" Jumbo Tissue w/ Stub Roll**

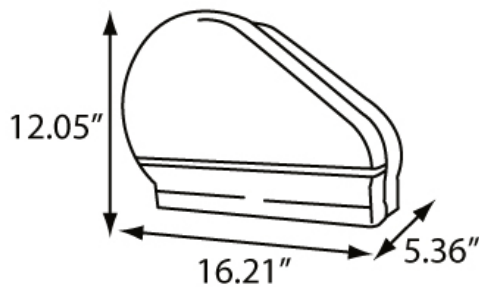
**Product Overview**

The RD0024 Single 9" Jumbo Tissue Dispenser with Stub is easy to use and install. The dispenser has a sliding panel which ensures the use of only one roll at a time. Designed for use with any universal 9" jumbo tissue roll.



**Product Features:**

- Small, compact design
- Sliding panel ensures the use of one roll at a time
- Double-latch lock prevents waste
- Translucent cover allows for easy view of paper
- 2 1/4" core, also includes a 3 3/8" adaptor
- ADA Compliant



**More information and images available online.**

MODEL #	COLOR	
RD0024-02F	BLACK TRANSLUCENT	02
RD0024-03F	WHITE TRANSLUCENT	03

**Specifications:**   

Dimensions (in)	16.21" w x 12.05" h x 5.36" d
Weight (lb)	2.60 lb
Key Type	1
Capacity	9" Jumbo Tissue + Stub
Case Pack	4 (3.08' <sup>3</sup> )
Pallet Qty	96 units